



Should we consider performing elective procedures on weekends? A Colonoscopy Example

SQAN Day
07-Oct-2019



fraserhealth

Better health.
Best in health care.

Disclosures



Presenters

Dr Dave Konkin

Regional Division Head, General Surgery, FHA

Department of Surgery Head (Local), Eagle Ridge Hospital

Division Head, General Surgery, Royal Columbian Hospital & Eagle Ridge Hospital

Clinical Associate Professor, UBC

Jackie Askew, RN, MA.

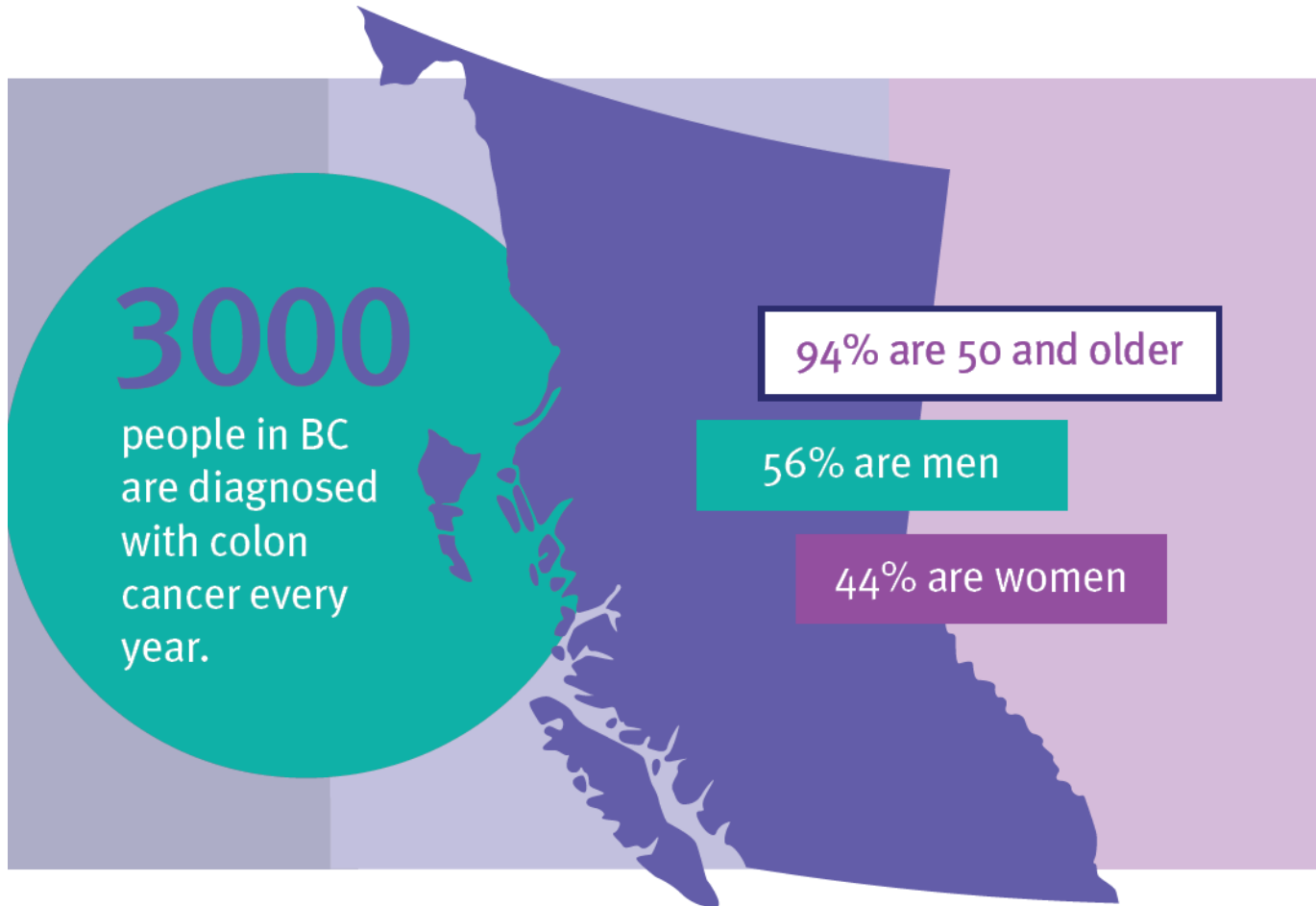
ERH Perioperative/Surgical Manager

Agenda



- A challenge
- A solution
- A solution with a challenge
- An opportunity
- Patient/staff experience
- **A challenge to all**

A CHALLENGE



Colon Screening Program (CSP)



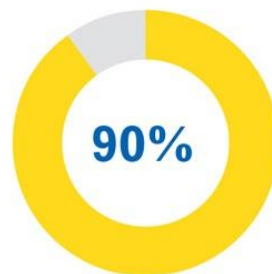
PREVENTION

**EARLY
DETECTION**



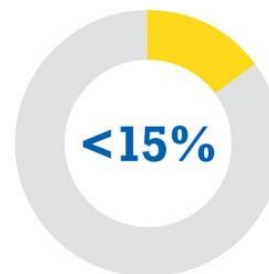
Colorectal cancer is the **2nd leading cause** of cancer death in Canada

5-year survival rates for colorectal cancer:



if caught early (stage 1)

vs



if caught late (stage 4)

Colon Screening Program (CSP)



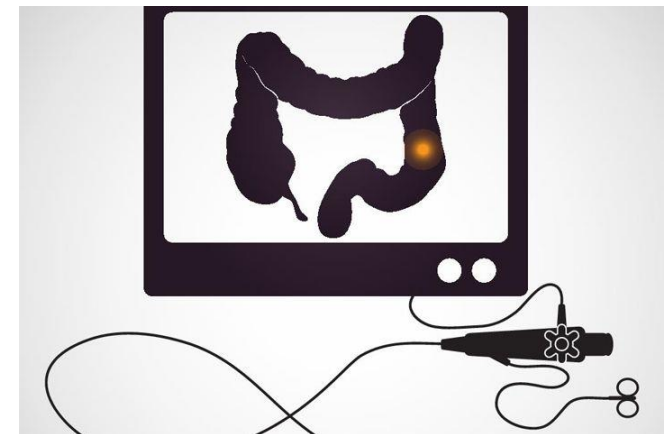
=> Launched November 2013

Recommended for
asymptomatic men and women,
ages 50-74

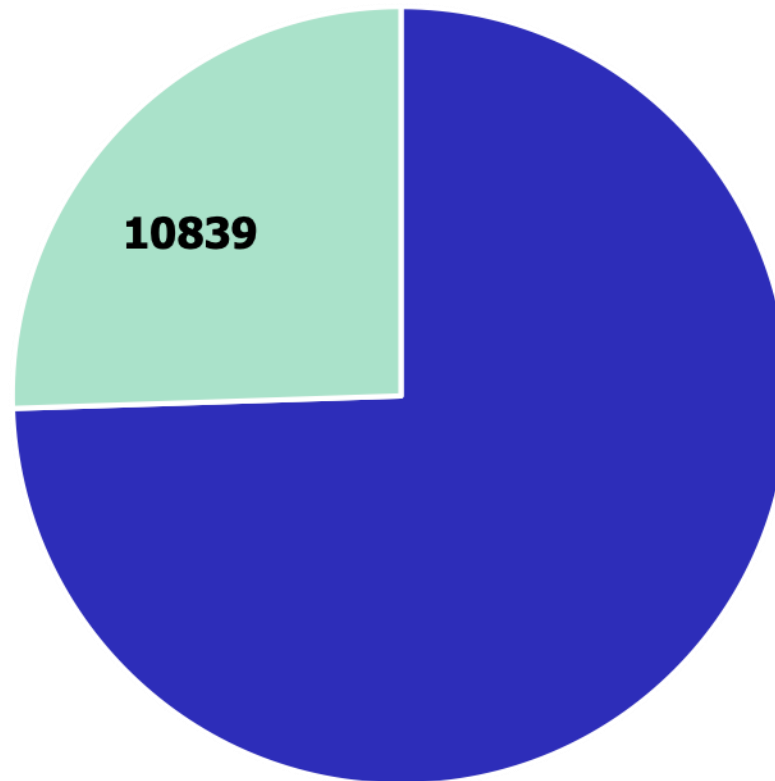


FIT (Fecal Immunochemical
Test)

If + → Colonoscopy



FH performed Colonoscopies T= 42,482



CSP 26%

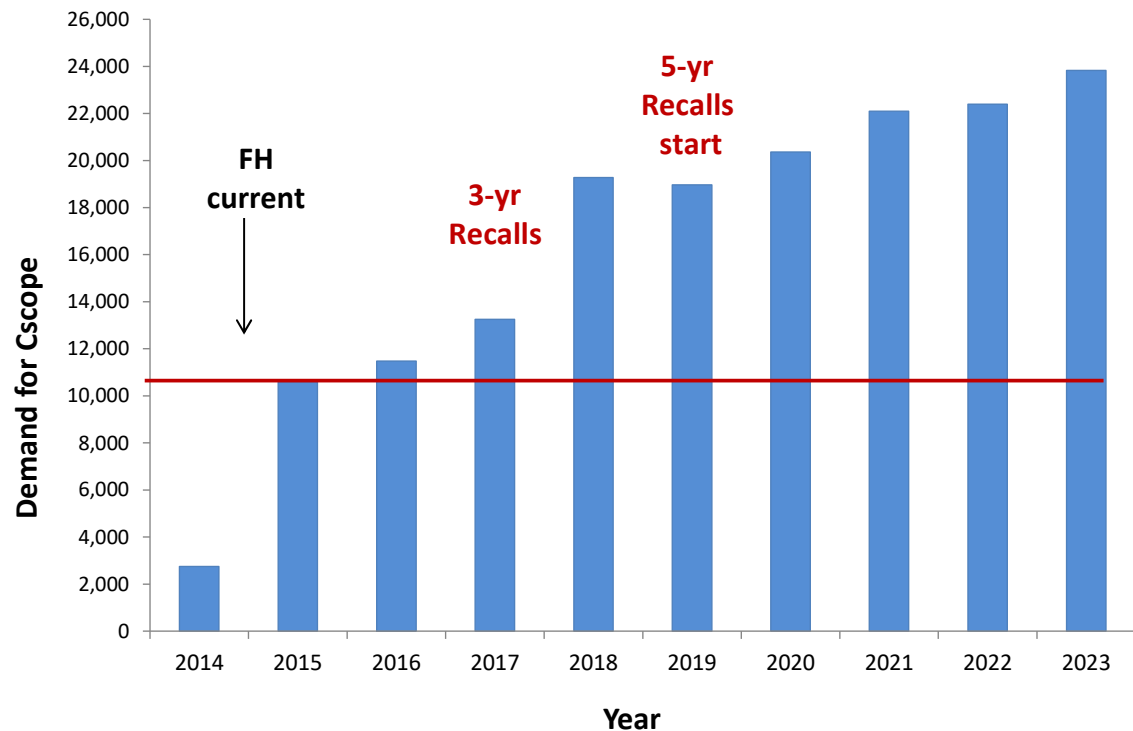
Colon Screening Program (CSP)



VICTIM OF OWN SUCCESS!!!!

↑ DEMAND

FIXED
CAPACITY



FIT+ with Assessment or Colonoscopy Pending *waited >2 months as of report run date Jul 7, 2019₂*



	Quarter Ending						% change*
	31-Mar-18	30-Jun-18	28-Sep-18	31-Dec-18	31-Mar-19	30-Jun-19	
BC	2,237	3,909	10,067	14,352	13,700	12,159	12%
Interior Health	491	586	980	1,008	905	582	-36%
Fraser Health	1,023	1,558	4,268	6,415	6,016	5,947	-1%
Vancouver Coastal	529	1,262	2,962	4,245	4,658	4,040	-13%
Island Health	186	493	1,857	2,689	2,187	1,563	-29%
Northern Health	No data						

The opportunity



- HOW DO WE INCREASE CAPACITY???

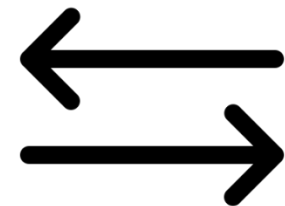
Extended rooms?
(start early? finish late?)

Saturdays?

The opportunity



- Next steps:
 - Engage all stakeholders (Administration, Nursing, Endoscopists (GI and general surgeons), MDR, FH CSP, Support staff)
 - Group meetings, emails, 1:1 feedback.



The planSaturday Clinics



- 15 patients/day (started June 2016)
- Clinic availability (the 1 endoscopy room)
- Equipment (colonoscopies)
- CSP Navigator and unit clerk coordination support
- Additional Endoscopist support

Saturday Clinics requirements (cont'd)



- Additional nursing and MDR staffing needed (4 x 7.5 hrs RN support + 1 x 7.5 hrs MDR support).
- Approximately \$1500 + benefits/relief per day (\$78,000 + annually)
- No clerical support

FY 2018/19



↑ 18.9%
(712 cases)

BUT what is the patient and staff experience re Saturday clinics?



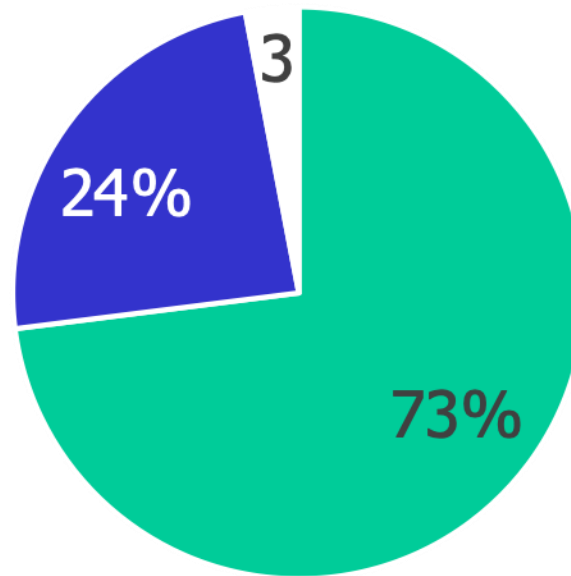
June - July 2019 Survey

- 100 patients
- 100% RNs/LPNs
- 90% Endoscopists

Patient Questionnaire



Q Did you choose to have your procedure performed Saturday

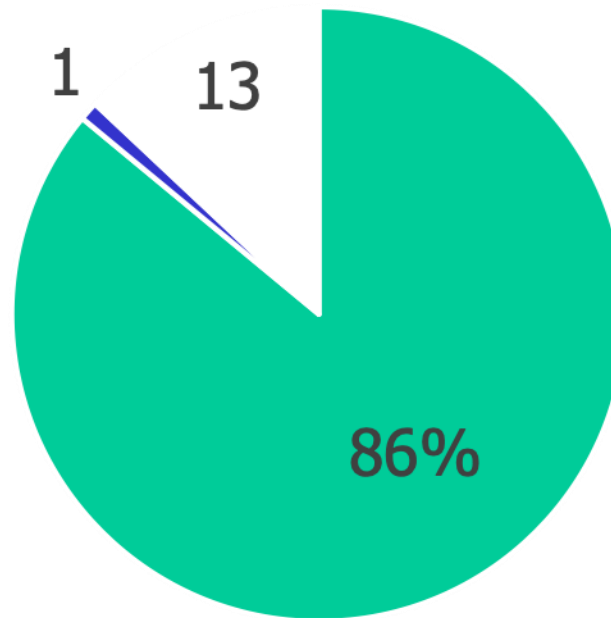


■ yes ■ no ■ cannot remember

Patient Questionnaire



Q Do you appreciate having your procedure performed on a Saturday?

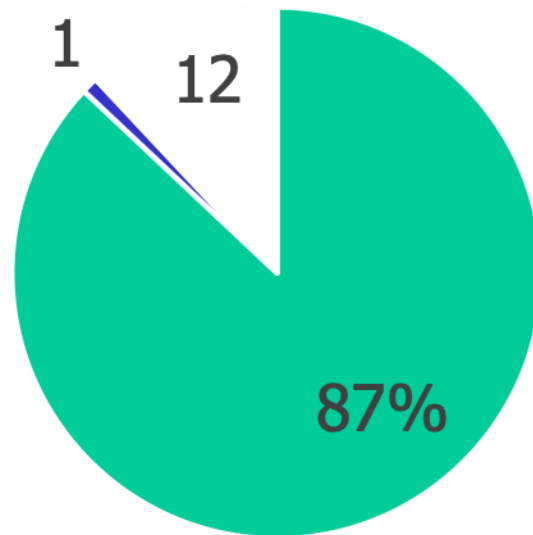


■ yes ■ no ■ indifferent

Patient Questionnaire



Q If you were to repeat procedure, would you like to have the option of choosing a Saturday?

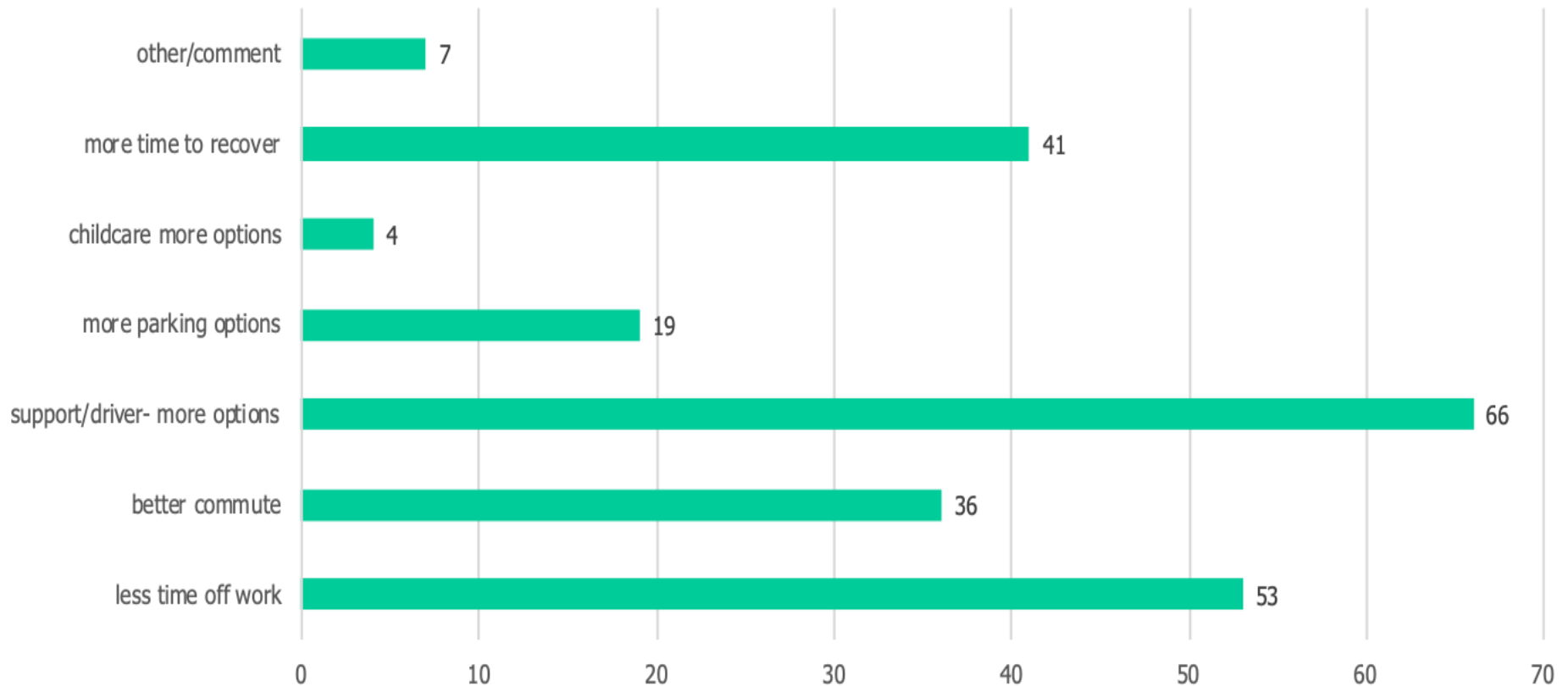


■ yes ■ no ■ indifferent

Patient Questionnaire



Q What would be factors influencing your decision to have the procedure on a Saturday?



Staff Questionnaire



What are some of your Advantages of working Saturdays ?

	NURSING	PHYSICIANS
More relaxed environment	50%	89%
Week day off	42%	22%
Better commute	33%	56%
Parking	25%	67%
More child care options	17%	22%
None	17%	11%

Staff Questionnaire



What are some of DISadvantages of working Saturdays ?

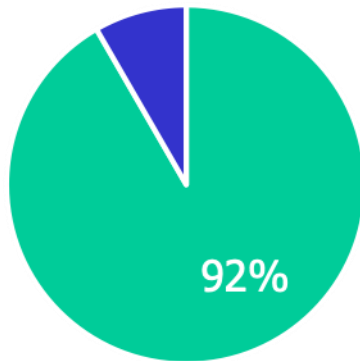
	NURSING	PHYSICIANS
Less support staff	75%	0
Less family time	50%	56%
Late start/finish	25%	11%
Overtime	17%	0
Childcare issues	17%	22%
None	17%	44%

Staff Questionnaire



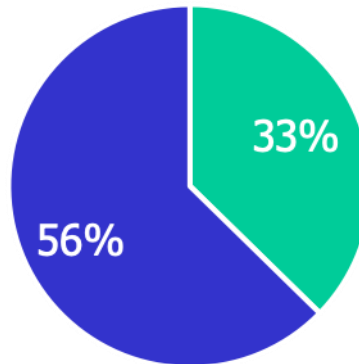
Is there a difference in staffing/support staff levels on Saturdays ?

Nursing



■ Yes ■ No

Physicians



■ Yes ■ No

Staff Questionnaire



What of the factors impact patient care/safety?

	NURSING	PHYSICIANS
Clerical duties	67%	0
Patients needing support/translational services	42%	0
Transporting specimens to the lab	25%	0
None	8%	100%

Staff Questionnaire



Is there an increased degree of patient/staff issues and concerns on Saturday?

	NURSING	PHYSICIANS
Staff safety	83%	0
Working alone in the admit-discharge area	75%	11%
Patient fall risk	58%	0
Post procedural complications	58%	0
Delays in patient rides	33%	0
None	8%	89%

Recommendations/Lessons learned



- ERH experience – patients want Saturday Clinic option
- With one-time funding for Saturday Clinics, waitlists would decrease significantly
- Imagine waitlists disappearing with ongoing funding for Saturday Clinics

References



1. Canadian Cancer Society, Canadian Cancer Statistics 2016 (www.cancer.ca). Page 5
2. BC Cancer Agency Colon Screening Program. Volume, Wait Time and Quality Initiatives Summary. Q1 – Produced Jul 2019

Acknowledgements



- ERH/FH leadership ongoing support
- ERH Ambulatory Care staff
- Marieta Telman, Ambulatory CNE
- Linda Malo, RN

Questions???



Thank You!!